

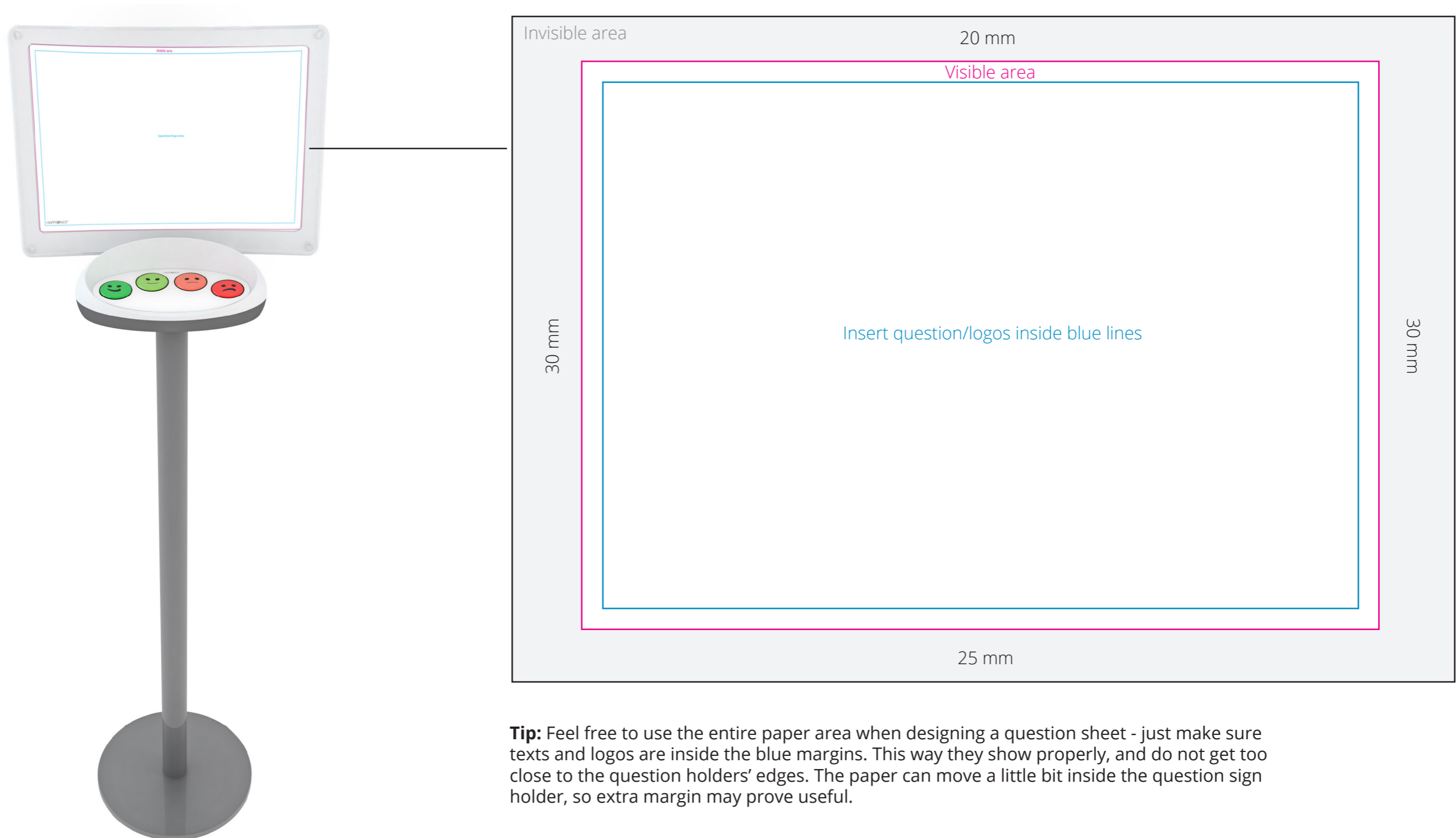
Designing a Question Sheet

Paper Size: A3

Grey area is left invisible under the question holders' borders.

Pink margins show the visible area of the question sheet.

Blue margins define the text and logo area. No crucial objects should be placed outside blue margins.



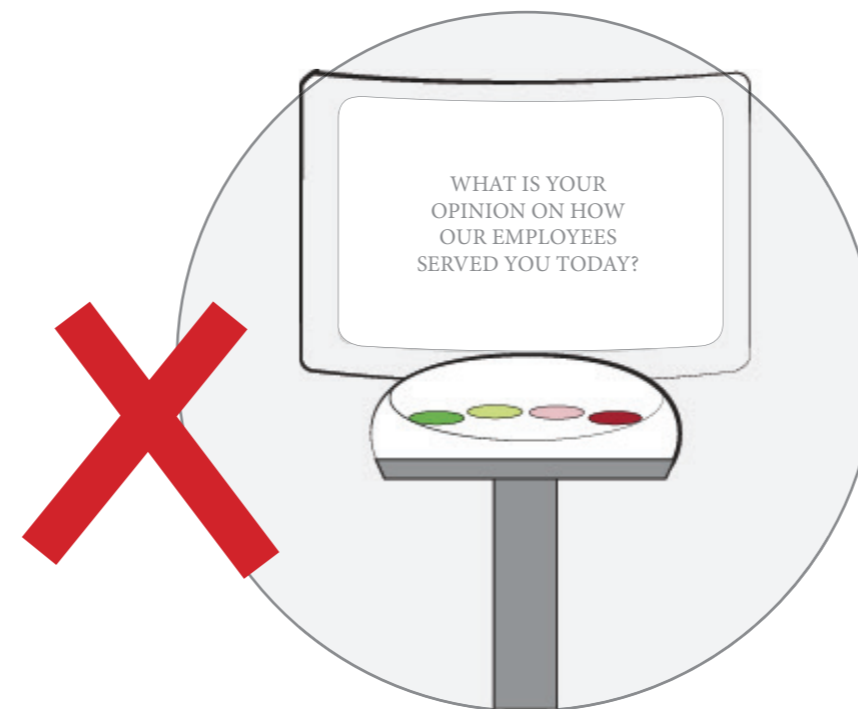
Tip: Feel free to use the entire paper area when designing a question sheet - just make sure texts and logos are inside the blue margins. This way they show properly, and do not get too close to the question holders' edges. The paper can move a little bit inside the question sign holder, so extra margin may prove useful.

Tip!***Optimize the amount of feedbacks with good question sign design.***

It is essential that the question sign is quick-to-read. The question sheet instructions below ensures that the customer will read and understand the question.

**Efficient**

- The question is short
- The question is written with the largest font size possible
- The text includes small and CAPITAL letters
- The text separates from its background

**Inefficient**

- The question is too long
- The text is written in too small of a font size
- The text is written in CAPITAL LETTERS
- The text blends into the background